

NEW ENGLAND ENVIRONMENTAL, INC.
ENVIRONMENTAL CONSULTING SERVICES



July 1, 2008

Ms. Michelle Turner
Plymouth Conservation Commission
11 Lincoln Street
Plymouth, MA 02360

RECEIVED

JUL 03 2008

Conservation Commission
Plymouth, MA

**RE: Post Construction Report
Disturbance Area Restoration
Great Island Community, Plymouth, MA
DEP File #: SE57-2314
Plymouth File #: PCC-08-05
NEE File # 08-3206**

Dear Ms. Turner:

New England Environmental, Inc. (NEE) on behalf of Pulte Homes New England, LLC (Pulte Homes) completed the restoration activities associated with the disturbance area on White Trellis Road (Great Island Community) in Plymouth, Massachusetts on June 27, 2008. The restoration work activities were conducted in accordance with the Order of Conditions issued for the project (DEP File #: SE57-2314) and the disturbance area restoration plan (Disturbance Area Restoration Plan, New England Environmental, Inc. Dated October 9, 2007). The purpose of the project was to re-establish plantings within an area of open space where the understory had been previously cleared. This report summarizes the restoration activities conducted by NEE within the disturbance area.

RESTORATION ACTIVITIES

On June 27, 2008 NEE completed the restoration activities associated with the disturbance area located to the east of residences at 41, 43 and 45 White Trellis in Plymouth. All of the disturbance restoration activities were conducted in accordance with the Order of Conditions and project site plans. Many of the plant materials were installed as described in the plant list on the project plans, however due to the lack of commercial availability, NEE requested (Proposed Plant Substitute Letter, NEE, dated June 13, 2008) approval from the Plymouth Conservation Commission of substitute plant materials for several plant species. The substitute plant list was approved by the Plymouth Conservation Commission on June 16, 2008.

Without the use of machinery, NEE installed the restoration plant materials within Disturbance Area "A" and "B". Table 1 (Disturbance Area "A" Installed Plant List) documents the species installed within the lower slope (5,378 square feet) and Table 2 (Disturbance Area "B" Installed Plant List) documents the species installed within the upper slope (16,009 square feet).



RECEIVED

JUN 16 2008

Conservation Commission
Plymouth, MA



NEW ENGLAND ENVIRONMENTAL, INC.
ENVIRONMENTAL CONSULTING SERVICES

June 13, 2008

Ms. Michelle Turner
Plymouth Conservation Commission
11 Lincoln Street
Plymouth, MA 02360

Via Email: MTurner@townhall.plymouth.ma.us

On Monday, June 16, 2008 the Conservation Commission approved the planting plan as outlined below as the Final Plan and shall replace the plan referenced in the Order of Conditions. Any further changes may also require approval by the Commission.

Michelle Turner
Admin. Asst.
Con. Commission

**RE: Proposed Plant Substitutions
Disturbance Area Restoration
Great Island Community – Plymouth, MA**

Dear Ms. Turner,

New England Environmental Inc. (NEE) has been reined by the residents of the Great Island Community to conduct the restoration services associated with the disturbance area located on White Trellis Road in Plymouth, Massachusetts. Please refer to the restoration plan prepared by NEE titled: Disturbance Area – Restoration Plan, Great Island Community, Plymouth, MA (dated 10-9-07). NEE has found it difficult to procure all of the plant species at the sizes approved by the Plymouth Conservation Commission. NEE proposes that the Commission review and approve the substitutions presented in the table below.

Approved Plant Species	Approved Plant Size	Proposed Substitution Species	Proposed Substitution Size
White Oak	5-6'	White Oak	2-3'
Speckled Alder	3-4'	Speckled Alder	2-3'
Sweet Fern	3-4'	Sweet Fern	12"-18"
Sand Cherry	3-4'	Sand Cherry	12"-18"
Pitch Pine	3-4'	Pitch Pine	2-3'

Both Sweet Fern and Sand Cherry are not typically sold in larger sizes than 12-18" (in height). As you are aware, these plants never grow to be larger than 2' in height. All other plantings not listed in the table above have been located by NEE and will be installed as proposed in the Disturbance Area – Restoration Plan.

NEE appreciates the Commission spending time to consider this request for substitutions. It is our intention to begin the plant installation work promptly after your response, ideally NEE wishes to install the plant materials the week of June 23. If you have any questions regarding this letter or the substitutions proposed, please do not hesitate to contact me at our office.

Sincerely,
New England Environmental, Inc.

Scott Fisher
Senior Restoration Specialist

New England Environmental, Inc.

9 Research Drive * Amherst, MA 01002-2774 * (413) 256-0202 * (413) 256-1092 fax



Following the installation of the plant materials, NEE seeded Disturbance Area "A" with New England Erosion Control Mix (Moist Sites) and seeded Disturbance Area "B" with New England Conservation Wildlife Seed Mix, as specified on the project plans. The locations of plant materials were determined by a NEE wetland scientist. Trees were placed in the vicinity of cut stumps, with little overhead obstruction from existing trees.

Table 1
Disturbance Area "A" - Installed Plant List

QUANTITY	SCIENTIFIC NAME	COMMON NAME	HEIGHT
5	<i>Acer rubrum</i>	Red Maple	2.5"-3" caliper
5	<i>Quercus alba</i>	White Oak	2-3'
2	<i>Populus tremuloides</i>	Quaking Aspen	4-6'
5	<i>Quercus rubra</i>	Red Oak	2.5"-3" caliper
6	<i>Alnus incana</i>	Speckled Alder	2-3'
6	<i>Comptonia peregrina</i>	Sweet Fern	12-18"
6	<i>Rhododendron viscosum</i>	Swamp Azalea	3'
6	<i>Rosa palustris</i>	Swamp Rose	3-4'
6	<i>Prunus depressa</i>	Sand Cherry	12-18"
6	<i>Ilex verticillata</i>	Winterberry Holly	3'

Table 2
Disturbance Area "B" - Installed Plant List

QUANTITY	SCIENTIFIC NAME	COMMON NAME	HEIGHT
8	<i>Acer rubrum</i>	Red Maple	2.5"-3" caliper
8	<i>Quercus alba</i>	White Oak	2-3'
7	<i>Pinus rigida</i>	Pitch Pine	2-3'
7	<i>Quercus rubra</i>	Red Oak	2.5"-3" caliper
12	<i>Vaccinium corymbosum</i>	Highbush Blueberry	2-3'
12	<i>Comptonia peregrina</i>	Sweet Fern	12-18"
12	<i>Rhododendron viscosum</i>	Swamp Azalea	3'
12	<i>Rosa palustris</i>	Swamp Rose	3-4'
12	<i>Prunus depressa</i>	Sand Cherry	12-18"
12	<i>Ilex verticillata</i>	Winterberry Holly	3'



POST CONSTRUCTION COMPLIANCE MONITORING

An inspection report summarizing the restoration plantings will be provided to the Commission on an annual basis (each spring) by NEE during the first three growing seasons (2009, 2010 & 2011). During the inspections, shrubs and trees observed to be deceased will be replaced when needed and additional seed will be spread if less than dense herbaceous vegetation is observed. Following the inspections, a report documenting the status of the areas will be submitted to your attention.

If you have any questions regarding the information presented, or future site visits, please do not hesitate to contact our office.

Sincerely,
New England Environmental, Inc.

Scott Fisher
Senior Restoration Specialist

cc: Mr. Scott Constantineau, Pulte Homes of New England, LLC
Massachusetts Department of Environmental Protection, Southeast Regional Office

enc. Site Photographs

Photo 1:

Photograph of the disturbance area plantings. Tree protection tape (white wrapping) was wrapped around the trunks of the large caliper trees to provide protection from rodents during the establishment period.

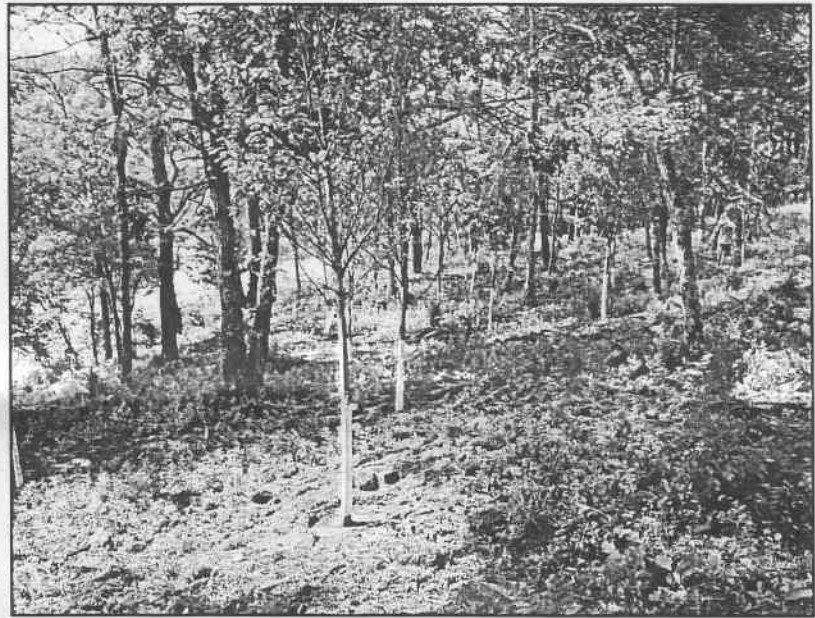


Photo 2:

The restoration plantings were positioning by a wetland scientist in locations that would provide sufficient growing conditions.

